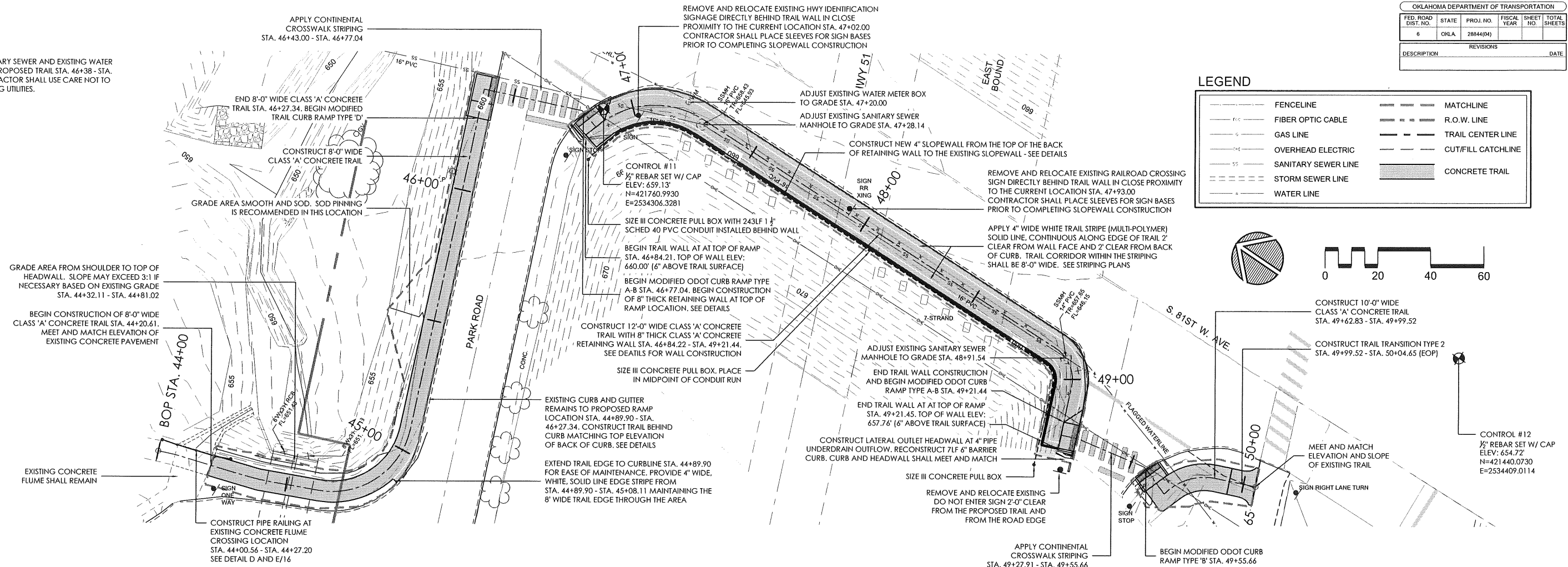


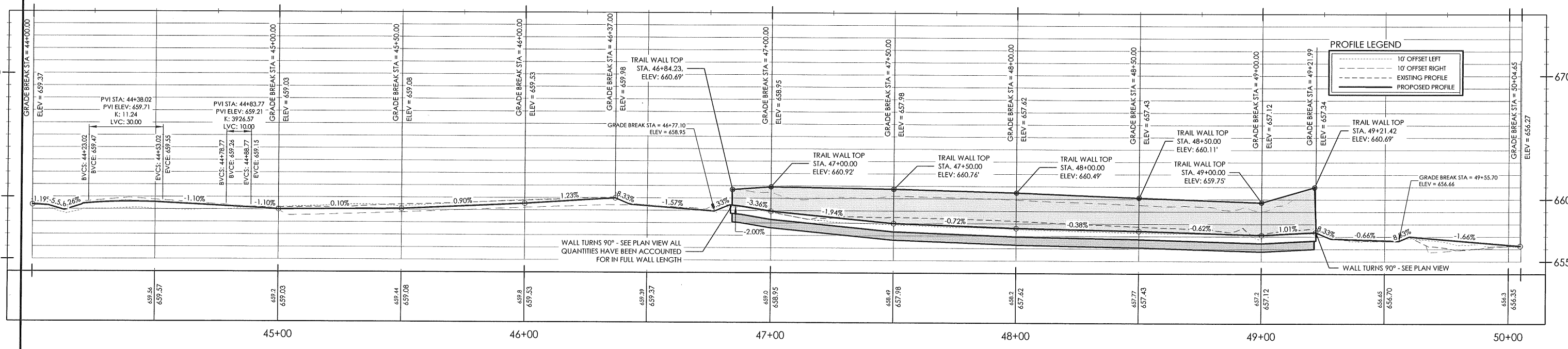
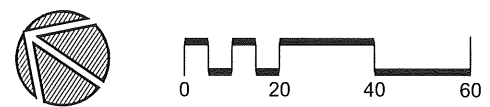
OKLAHOMA DEPARTMENT OF TRANSPORTATION					
FED. ROAD DIST. NO.	STATE	PROJ. NO.	FISCAL YEAR	SHEET NO.	TOTAL SHEETS
6	OKLA	28844(04)			
DESCRIPTION				REVISIONS	DATE

**CAUTION:**  
EXISTING SANITARY SEWER AND EXISTING WATER MAIN BELOW PROPOSED TRAIL STA. 46+38 - STA. 49+00. CONTRACTOR SHALL USE CARE NOT TO DISTURB EXISTING UTILITIES.

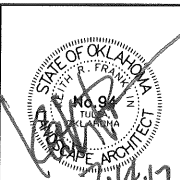


**LEGEND**

---	FENCELINE	---	MATCHLINE
---	FIBER OPTIC CABLE	---	R.O.W. LINE
---	GAS LINE	---	TRAIL CENTER LINE
---	OVERHEAD ELECTRIC	---	CUT/FILL CATCHLINE
---	SANITARY SEWER LINE	---	CONCRETE TRAIL
---	STORM SEWER LINE		
---	WATER LINE		



F:\582 Sand Springs Park Road Trail\Final\Civil 3D - Base Files\582 - Plan-Profile Sheet - Second Segment-R1.dwg, 7/14/2017 9:19:06 AM



City of Sand Springs - Park Road Trail			PREPARED BY <b>LANDPLAN CONSULTANTS</b>	
Design	JM	7/16	Tulsa County	
Drawn	JM/BB	8/16	<b>PLAN &amp; PROFILE (9)</b>	
Checked	KF/JM	6/17		
Approved				
Squad	LandPlan		STATE JOB NO. 28844(04)	Sheet No. 39 of 62